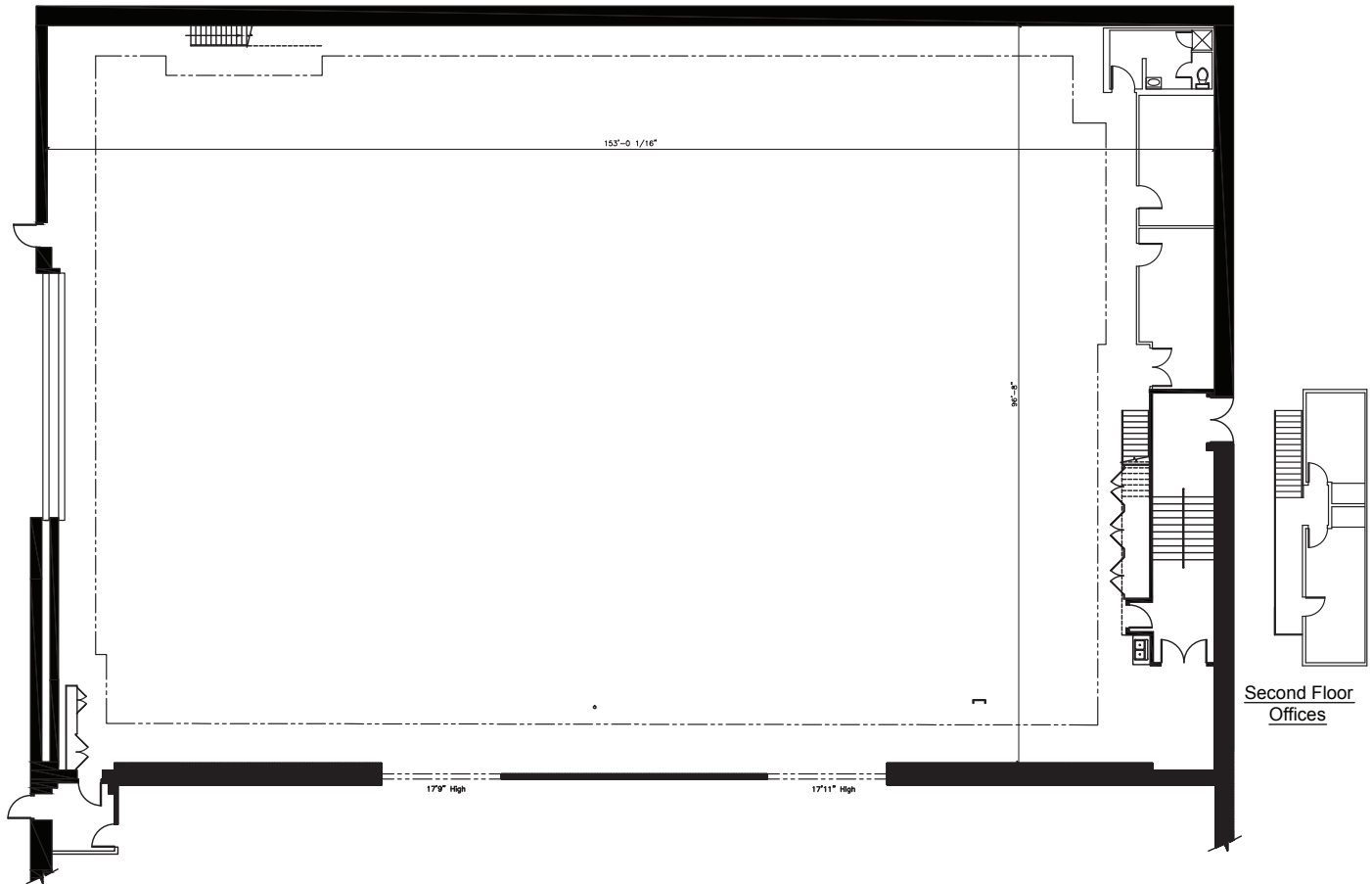


# STAGE 19

THE STUDIOS  
★★★★at★★★★  
*Paramount*

## Floorplan



### Dimensions

|                            |                  |
|----------------------------|------------------|
| <b>Width</b>               | <b>153'</b>      |
| <b>Length</b>              | <b>97'-7"</b>    |
| <b>Height</b>              | <b>35'</b>       |
| <b>Square Feet</b>         | <b>14,930</b>    |
| <b>Door Height</b>         | <b>22'-11"</b>   |
| <b>Max Weight Capacity</b> | <b>10,000lbs</b> |

### Previous Productions Shot on this Stage:

#### Movies

Citizen Kane  
Ghost

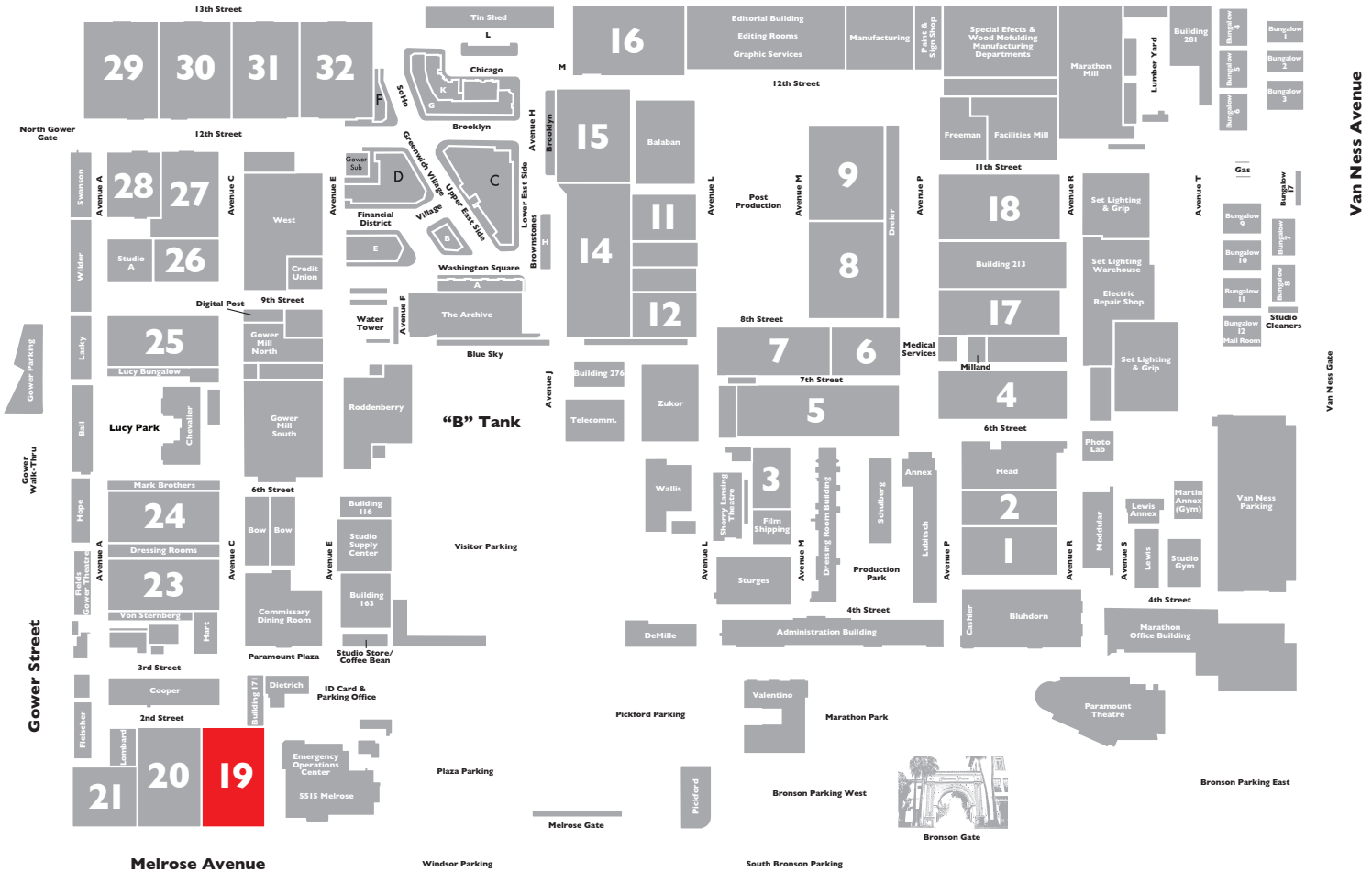
#### Television

My Three Sons  
That Girl  
Odd Couple  
Happy Days  
Wings

# STAGE 19



## Stage Location



## Specifications

|                                 |                     |
|---------------------------------|---------------------|
| <b>Power*</b>                   | <b>7,500A</b>       |
| <b>HVAC</b>                     | <b>100T</b>         |
| <b>Red Light Controlled</b>     | <b>Yes</b>          |
| <b>Heat</b>                     | <b>Hanging Heat</b> |
| <b>Utilities (Air at 90PSI)</b> | <b>G/W/A</b>        |
| <b>Wi-Fi Internet Access</b>    |                     |

\* (IP2W fixed AC power (cam locks) available as 120/208V 3P4W)